



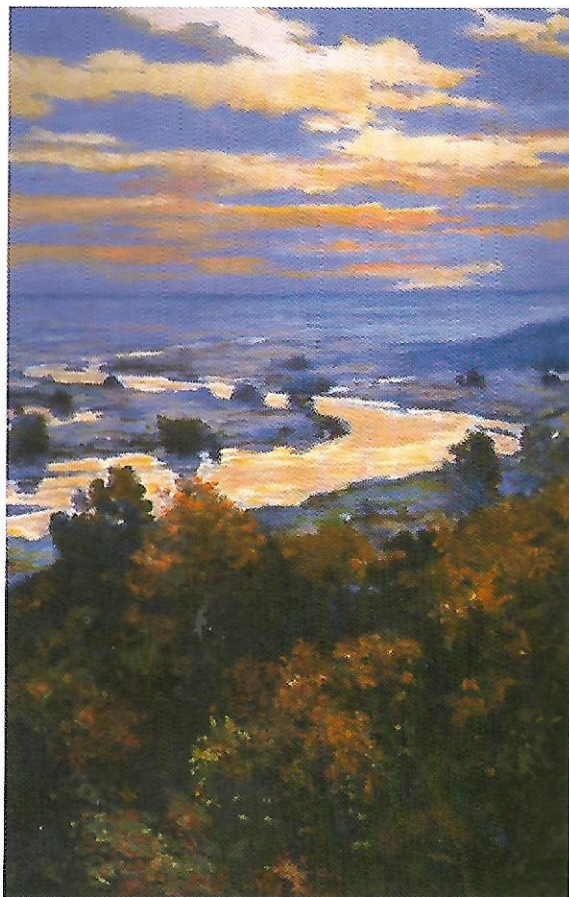
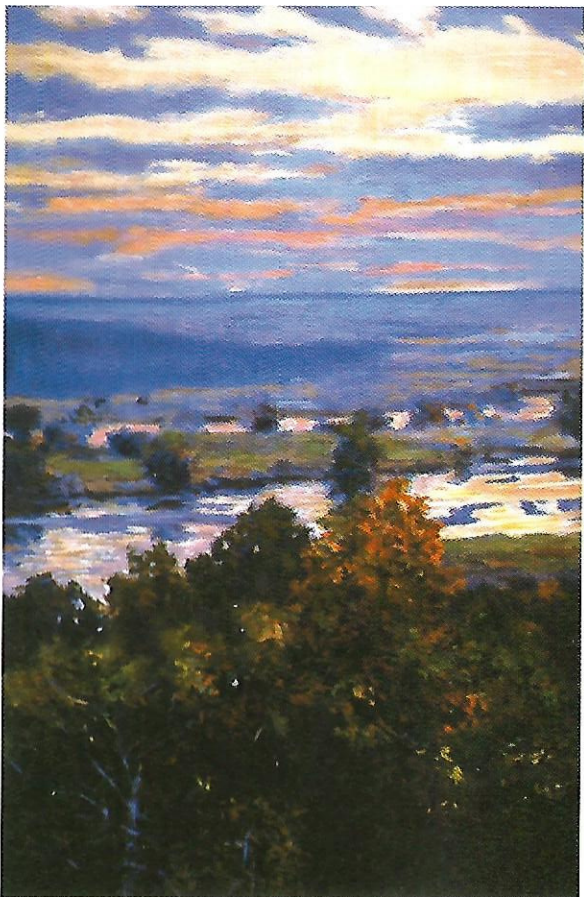
ORIGINAL PAINTINGS AND PRINTWORKS BY DOUGLAS EDWARDS

*Progressive  
Exhibitions*

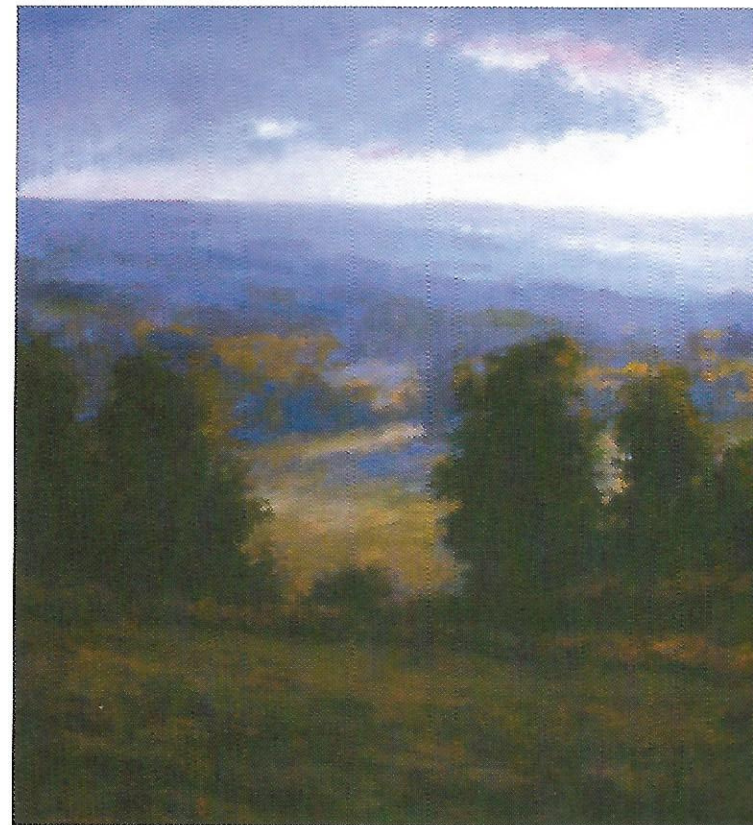




DOUGLAS EDWARDS



BOW VALLEY I & II / SERIGRAPH / SET OF TWO 36" x 24" / EDITION 200

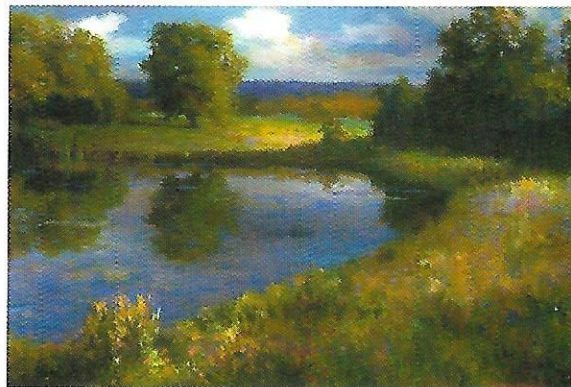
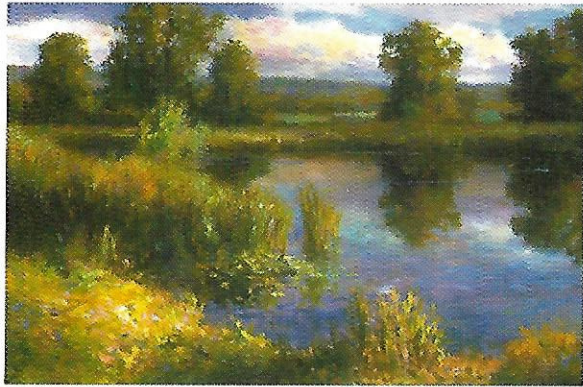


ARTIST STATEMENT: DOUG EDWARDS

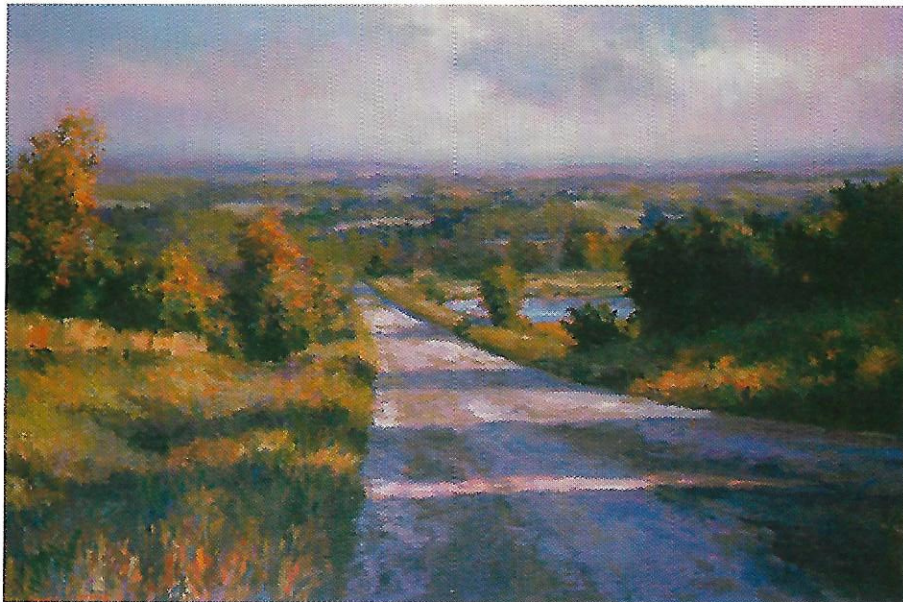
"I PAINT WITH THE INTENTION OF GOING ON A JOURNEY. ALTHOUGH I HAVE PRELIMINARY IDEAS, I TRULY RELY ON THE EMOTIONAL IMPRESSION I GET AT THE OUTSET. I TRY TO LOOK AT THINGS WITHOUT PRECONCEIVED NOTIONS; SIMILAR TO THE WAY A CHILD WOULD LOOK AT SOMETHING NEW. I WANT TO OPEN UP TO NEW IDEAS; A NEW VISION THAT WILL LEAD ME ON A JOURNEY THROUGHOUT THE JOURNEY."

-D. EDWARDS





MACINTOSH POND I & II / SERIGRAPHS 24" x 36" / EDITION SIZE 200



LAVENDER HILL / SERIGRAPH 27" x 42" / EDITION SIZE 200



SELECTED EXHIBITIONS: [PARTIAL LIST]

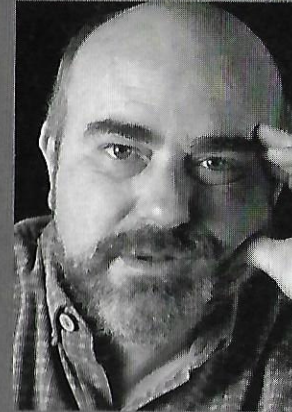
- 1998 HOLLANDER-YORK GALLERY, TORONTO
- 1995 GALERIE ROCHON, TORONTO
- 1994 GALERIE ROCHON
- 1992 GALERIE ROCHON
- 1991 GALERIE ROCHON
- 1990 QUAN-SCHIEDER GALLERY
- 1988 THEGALLERY,KUNGSANGEN, SWEDEN
- 1988 MEDBORGARSKOL GALLERY, BASTAD, SWEDEN
- 1988 GALLERY 306, TORONTO
- 1987 GALLERY 306, TORONTO
- 1986 CEDAR RIDGE CREATIVE CENTER, SCARBOROUGH
- 1985 HELICONIAN CLUB, TORONTO
- 1984 THE CREEMORE ART GALLERY, CREEMORE

SELECTED COLLECTIONS [PARTIAL LIST]

- AMERICAN AIRLINES
- ALTIMIRA INVESTMENTS
- BELL CANADA
- B.C.E.PLACE ( BELL CANADA ENTERPRISE), TORONTO
- CANADIAN AIRLINES
- CANADIAN (CBC) BROADCASTING CORPORATION, TORONTO
- CANADIAN IMPERIAL BANK OF COMMERCE
- CANADIAN TIRE CORPORATION.
- CHUBB (SECURITY) GROUP
- CONSUMERS GAS
- CROSROE LIMITED, HALIFAX, YORKSHIRE, ENGLAND
- DELTA HOTEL RESORTS
- DE HAVILAND AIRCRAFT
- DELOITTE & TOUCHE
- DUN & BRADSTREET
- FIDELITY INVESTMENTS
- JACK IRVING (IRVING OIL), N.B.
- THE FINANCIAL POST
- GEORGIAN GROUP GOVERNMENT OF ONTARIO,
- Q.P.GOVERNOR GENERAL'S HORSE GUARD
- HILL & KNOWLTON, NEW YORK
- INSURANCE BUREAU OF CANADA
- MANULIFE INVESTORS
- NORANDA
- NORWICH UNION LIFE INSURANCE
- TELESAT MOBILE INC., MONTREAL, QUEBEC
- TEMPLETON MANAGEMENT LTD
- TORONTO SUN
- ZURICH LIFE



DOUGLAS EDWARDS



..., Douglas Edwards, Dougl  
nials to his fondness for the light an  
Canadian landscape.

He studied at the Ontario College of A  
ing in portraiture. In his final year, he  
where he was introduced to landscape  
the formal limitations of classical portra  
to explore the liberating aspects of  
Edwards painted his first sky, which wa  
because it enabled him to deal specific  
light without form.

Upon his return to Canada, Edwards fr  
of making a living as an artist. He w

first and finally, after almost a year since his return from Florence  
He painted several commissioned portraits and decorative work  
decided to spend some time in Creemore, Ontario painting landsc  
Edwards clearly enjoys studying and painting the changing skies o  
and under different climactic conditions. He begins with location  
takes photographs, then returns to his Toronto studio and paints u  
a loose brush technique using complementary colours and colour c  
to leave his paintings under-finished, leaving something for the vie  
There is a monumental, ethereal quality to Edwards' landscapes. A  
Bagley, "Edwards still reminds us that one's soul extends well beyo  
Edwards has been awarded several prizes for his art creations an  
numerous private corporate collections including American Airline  
Canada and Royal Trust.